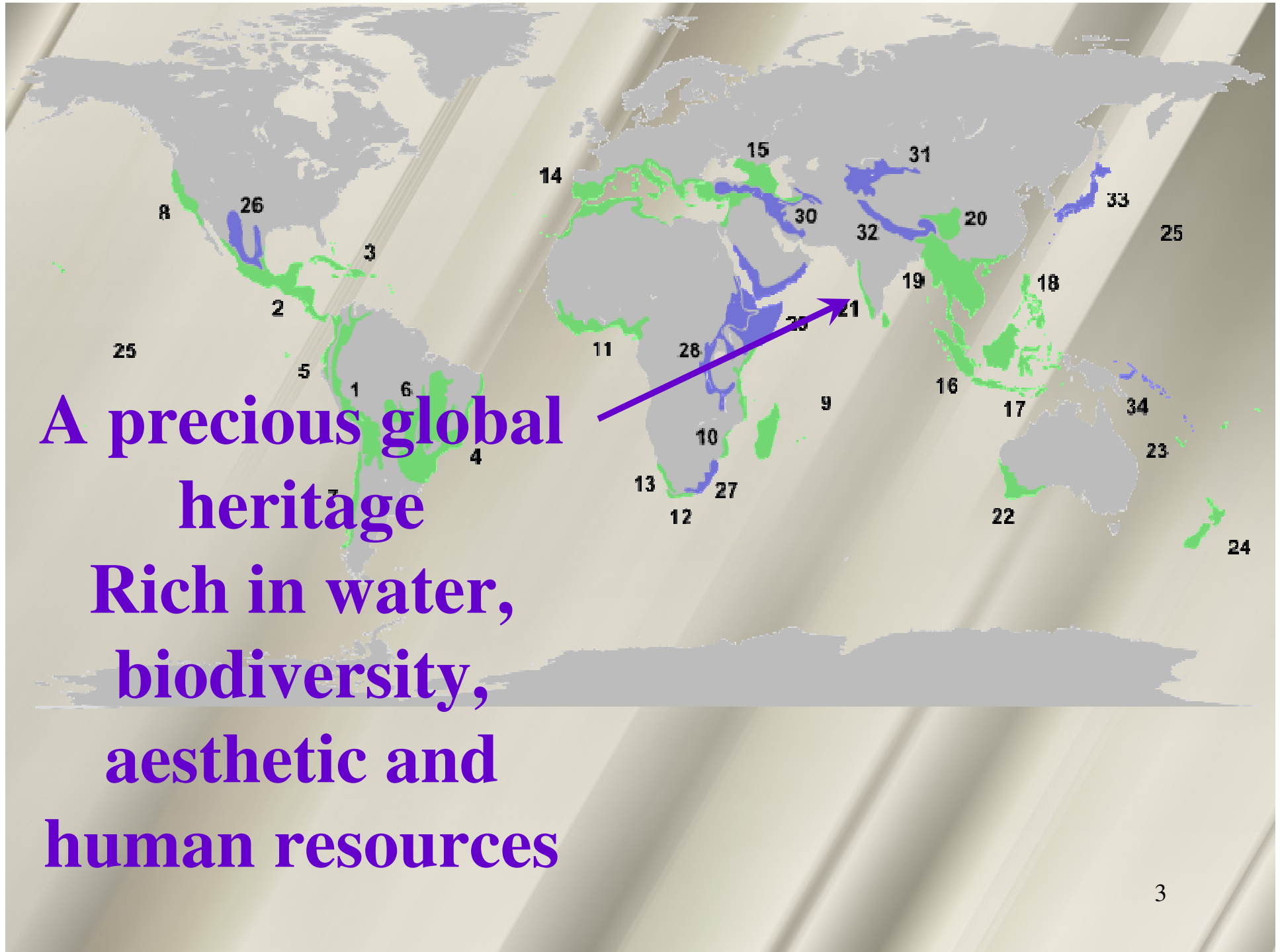




**Nurturing nature,
while bringing
prosperity to
people of Western
Ghats and at least
of six states**

Madhav Gadgil
17th August 2010
WGEEP 5th
Meeting

**Western Ghats is the major
source for water for
Agriculture in six States,
and also for drinking for
about 24.5 crore people**



A precious global heritage
Rich in water, biodiversity, aesthetic and human resources

Unduly destructive development



**Refugees came to Ramnagar
resettlement colony after the rich
forest had all been clear-felled by
Govt agencies, and soil allowed to be
eroded by five years of heavy rains**

**Destructive development projects
are going ahead, despite every
Gram panchayat in the locality
resolving that they do not want
such activities**



Janni Sacred Grove, Pune district

Practice of destructive development;
People's traditions of conservation

जागोजागहि दाटल्या
निबिड की त्या राहट्या
रानटी ।

ते आईनहि, खैर, किंदळ
तसे पाईरही वाढती ॥

वेली थोर इतस्ततः
पसरुनी जातात गुंतून रे
।

चेष्टा त्यामधुनी यथेच्छ
करिती नानांपरी वानरे ॥

On WGEEP agenda

Assessing ecological sensitivity

Attributes that render a landscape more susceptible to damage, such as steep slopes

High conservation value of a landscape, e.g. origins of rivers or habitat of many endemic species

Historical evidence of susceptibility

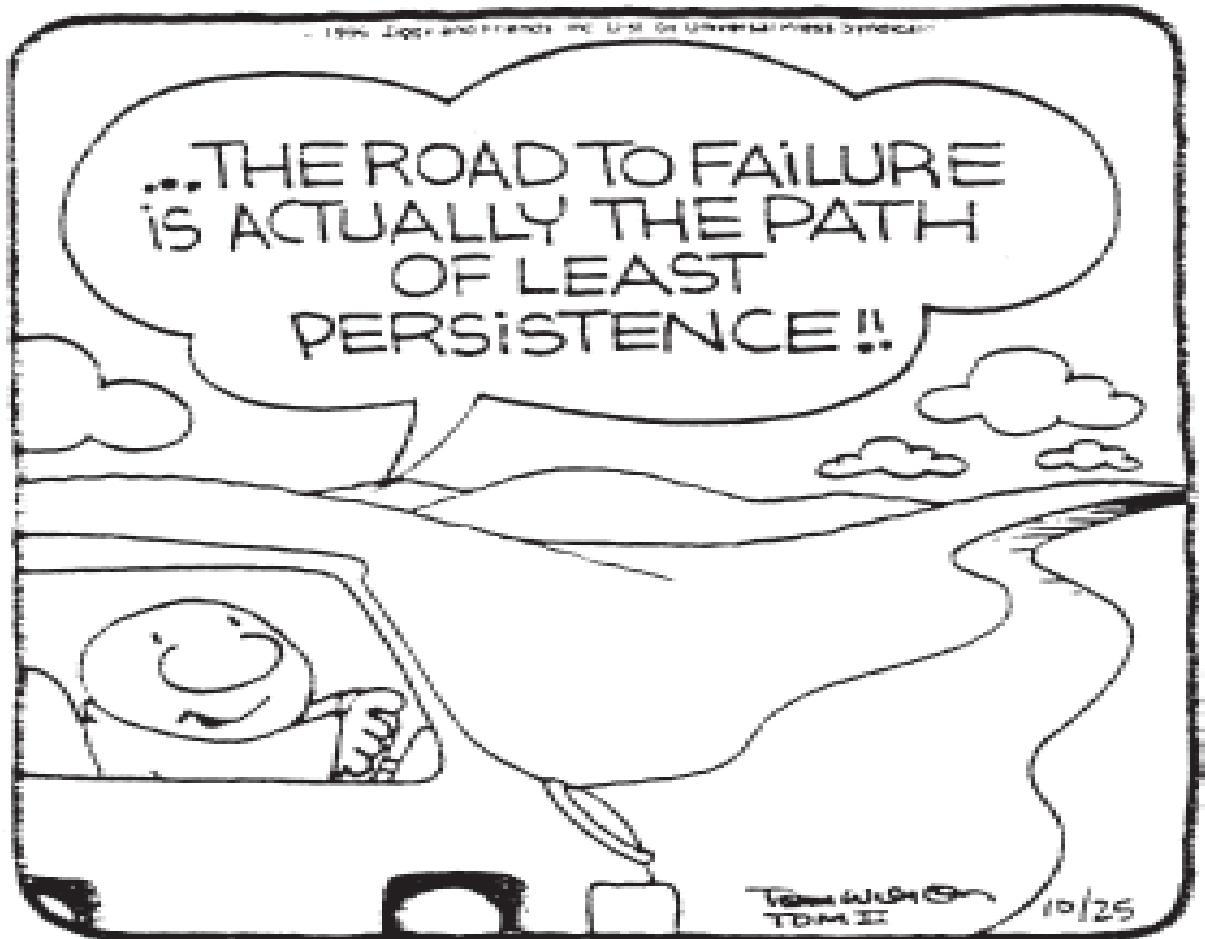
Nilgiri
hill
streams




Deepening our understanding

- Developing a web-based geographically referenced database
- Drawing up on the excellent pool of available expertise
- Encouraging all interested parties, not just experts, to contribute

Let us get away from business as usual, of viewing ecological concerns, Ecologically Sensitive Areas, as merely a nuisance, an impediment to development

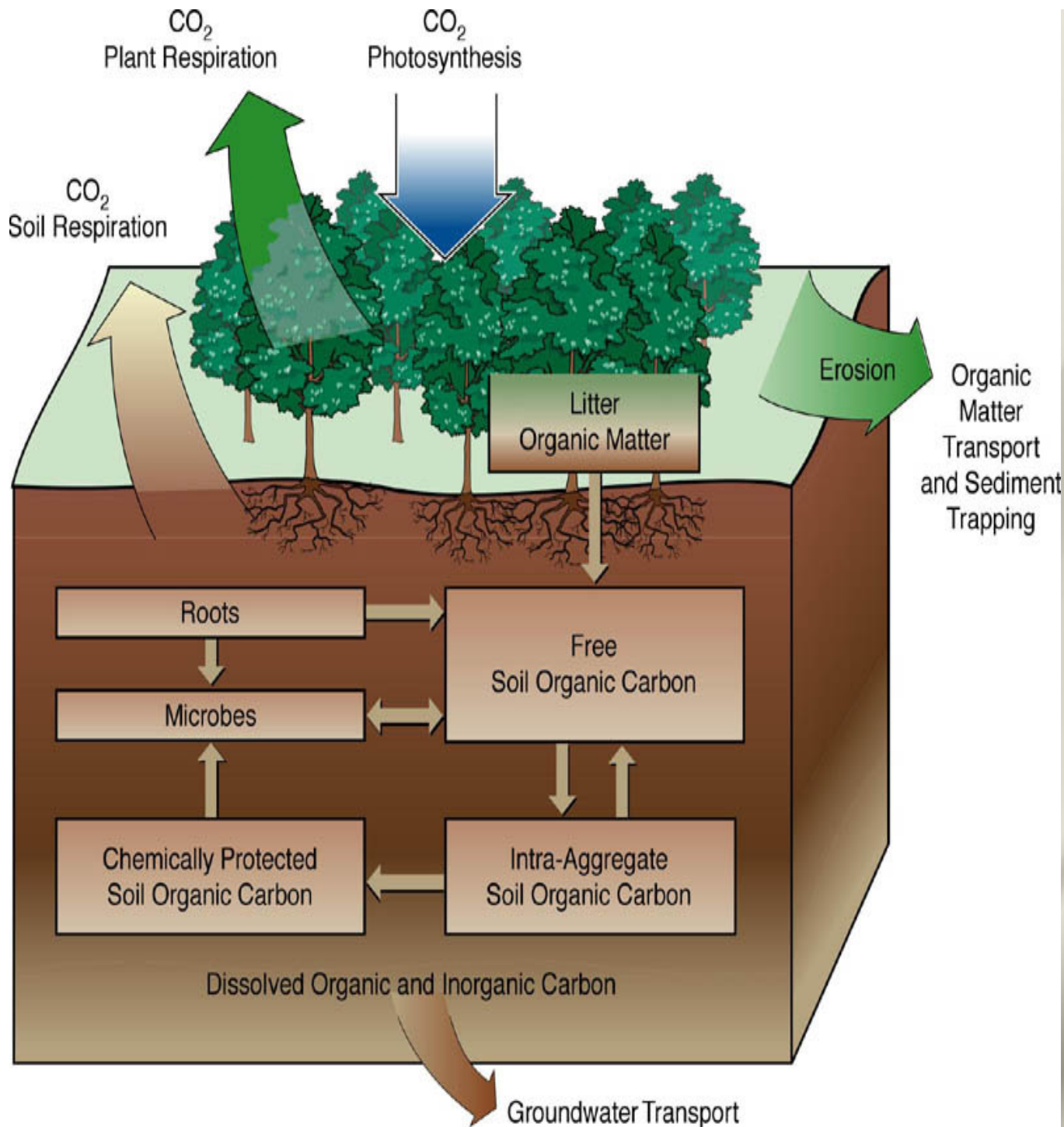


Instead, let us consider some new perspectives, new initiatives

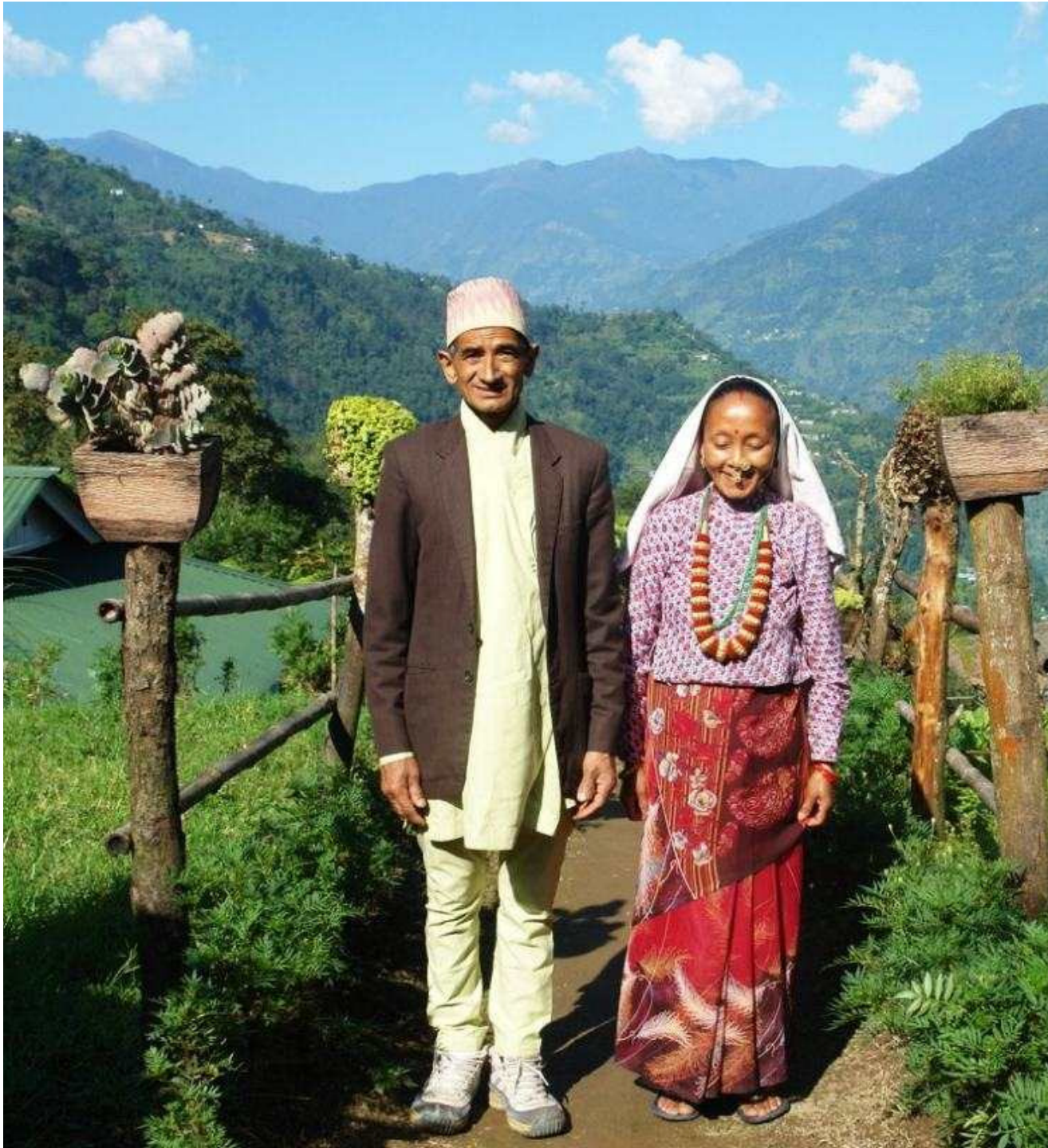
An aerial photograph of a dense tropical forest. In the center, there is a large, irregularly shaped area where the forest has been cleared, showing a network of dirt paths and exposed tree stumps. The surrounding forest is lush and green, with varying shades of green and brown. The text is overlaid on the image in a bright yellow color.

New perspectives, new initiatives

**Payment of
Conservation
Service
Charges to
guardians of
nature, as is
being done in
Costa Rica**



Australian model of payment for soil carbon sequestration to farmers



Protecting
nature,
taking
prosperity
to people
thru
homestead
tourism as
in Sikkim



Hill
farmers, as
in Ajra
taluka of
Kolhapur
district
could
profitably
cultivate
*Gloriosa
superba*

Instead, they are wasting labour to
remove it as a weed!



**Kerala plans to create Green
Technology Youth Brigades in each
Panchayat**

Green development packages

WGEEP is striving to put
together green
development packages for
the ecological treasure
trove that is our Western
Ghats



Experts are
people who
know more and
more about less
and less;
While a
holistic
perspective is
the key to good
environmental
practice



**Environmental Impact
Assessments completely ignore
impacts of power lines
associated with every power
project**

(c) Anil R

Western Ghats Ecology Expert Panel

Welcomes
inputs
from all
quarters

